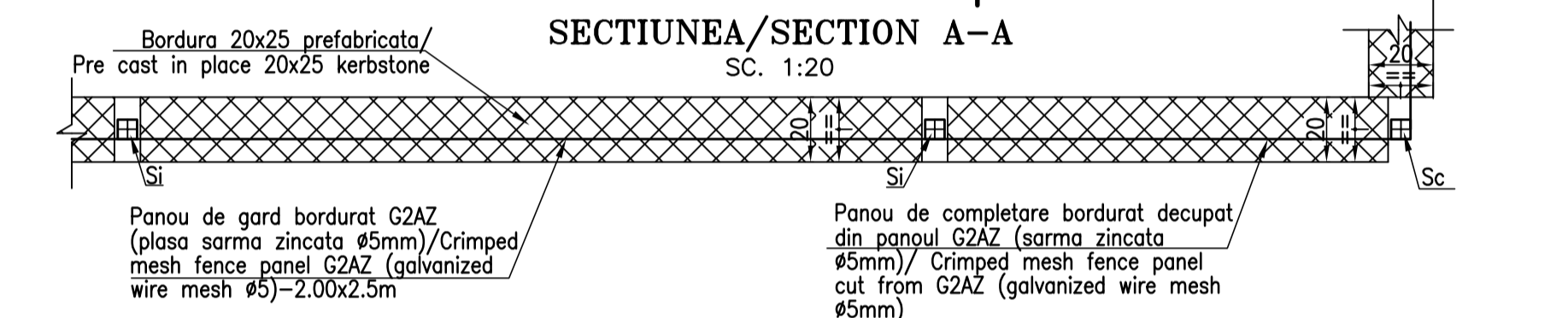
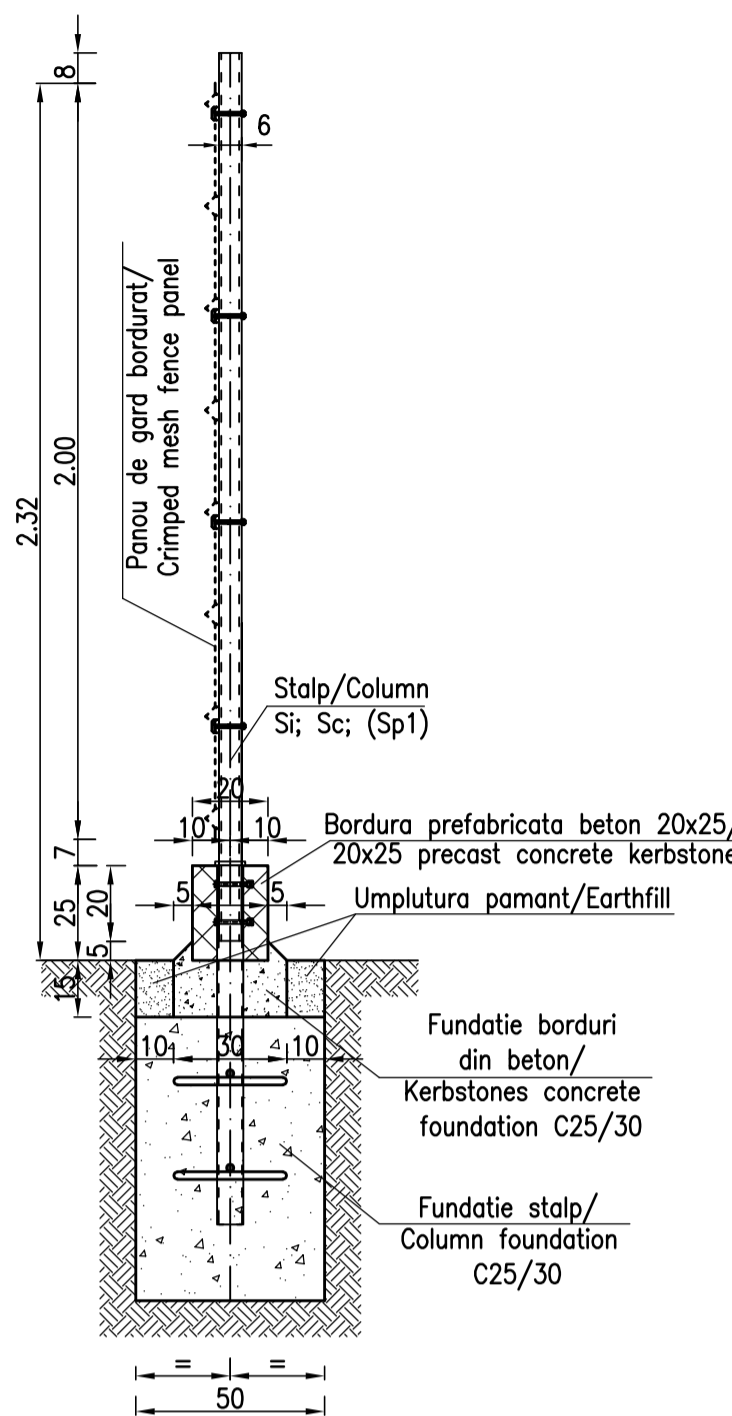


TRAVEE/BAY COMPLETARE

Technical drawing of a fence panel fastener assembly. The drawing shows a square fastener with rounded corners, a central vertical rod, and a horizontal base plate. Dimensions are provided in millimeters: the fastener body is 60mm wide and 60mm high; the central rod has a diameter of 6mm; the base plate is 60mm wide and 30mm high; the fastener body has a thickness of 30mm; the base plate has a thickness of 5mm; the fastener body has a central hole of 30mm diameter; the base plate has a central hole of 30mm diameter; the fastener body has a central hole of 30mm diameter; the base plate has a central hole of 30mm diameter. Labels include "fixare panou / fastening clamp" and "Sarma panou gard / Fence panel wire Ø5mm".



Technical drawing of a vertical pile foundation. The drawing shows a cross-section of a pile driven into a concrete foundation. The pile is labeled "Teava pirita/ Square tube 60x6-2345 P12". The foundation is labeled "Fundatie beton/ Concrete foundation C25/30". Dimensions are given in meters: total height 3.30, height above ground 2.55, height of pile above foundation 2.55, height of pile in foundation 0.75, and height of pile in foundation 0.75. The pile diameter is 60 mm. The foundation width is 50 mm. The drawing also shows a detail of the pile head and a detail of the pile connection.

Technical drawing of the gate structure showing dimensions and components. The drawing includes a cross-section of the gate and its foundation. Key dimensions include a total height of 3.10, a top section of 2.55, and a bottom section of 2.30. The gate is supported by a concrete foundation (Fundatie beton/Concrete foundation C25/30) with a width of 50/50. The gate structure consists of a square tube (Square tube 60x6-2345), a teava petrita (P12), and a balamale (Pedestrian gate hinges). A detail A is shown at the top of the gate.

Technical drawing of a concrete foundation and pile cap assembly. The drawing shows a cross-section of a foundation with a pile cap and a pile. The foundation is labeled "Fundatie beton/ Concrete foundation" and has a width of 120 cm. The pile cap is labeled "Betonale poarta auto/ Driver gate hinges" and has a width of 60 cm. The pile is labeled "2014-3100 P4" and has a diameter of 25 cm. The drawing includes dimensions for the foundation, pile cap, and pile, as well as a detail view of the pile cap reinforcement.

[illegible]

• Pozitionarea panourilor de gard si a stalpilor conform plan general amplasare PR1214+-CS01-01.

• Panourile de gard bordurate din plasa de sarma zincata 2.00x2.50; g=24.30Kg/panou;

• Panourile de completare se obtin prin decuparea din panoul principal;

• Fixarea panourilor de gard si a celor pentru partea auto si pietonala pe stalpi se face clemine zincate M8 de tip T.

• La executarea si la verificarea vor respecta prescriptiile tehnice din urmatoarele acte normative:

STAS 9824 – 11-1987 Masuratori terestre.

• C 83 – 1975 Indrumator pentru executarea trasarii de detalii

• C 169-88 Normativ privind executarea lucrarilor de terasamente pentru realizarea fundatiilor constructiilor civile si industriale;

• NP 112-2014 Normativ pentru proiectarea structurilor de fundare direct;

• NE 012/1-2007 Normativ pentru producerea betonului si executarea lucrarilor din beton, beton armat si beton precomprimat – Partea 1: Producerea betonului

• NE 012/2-2010 Normativ pentru producerea si executarea lucrarilor din beton, beton armat si beton precomprimat – Partea 2: Executarea lucrarilor din beton

• STAS 767/0-88 Constructii din otel. Conditii tehnice generale de calitate.

• Constructiile metalice se incadreaza in categoria B conform STAS 767/0-88.

• Prescriptiile pentru proiectarea si fabricarea constructiilor metalice se incadreaza in nivelul D de acceptare conform C 150-99 Normativ Privind Calitatea Imbinarii

Sudate Din Otel Ale Constructiilor Civile, Industriale Si Agricole si se verifica vizual (100% aspect si 100% dimensiuni geometrice).


• Protectia anticoroziva cu sistem de vopsire a structurilor de otel pentru durabilitate medie(M) 5-10 ani si clasa de corozivitate (atmosferica) C3(conform GP121-2013 si GP111-2004 realizata (cu exceptia panourilor gard care sunt zincate din fabrica) cu grund epoxidic 1 strat (80 µm grosime)+ 2 straturi vopsea epoxidica(2*80 µm grosime) in conformitate cu SR EN ISO 12944-5: 2008.

• Aplicarea grundului se face la uzinare pe suprafetelor pregatite pentru Sa 2.5-SR EN 8501-1: 2007.

• Pentru sudurile in relief nespecificate grosimea cordonului de sudura "a" va fi de 0.7xunghiul grosimii elementului cel mai subtire care se sudueaza.

• Gaurile pentru gurile clemelor si balamalelor de stalpi se executa la montaj.

• Gaurirea postilor P12' si P12 pentru suruburi se executa la montaj. Gulerul P15 este sudat doar de P12.


 $S_1 > S_2$
 $\alpha = 0,7 \times S_2$



Technical drawing of a square plate with a central hole and a cross-shaped slot. The plate has a total width of 50 and a total height of 50. The central hole has a diameter of 40. The cross-shaped slot has a width of 12. The plate is surrounded by a 5mm thick border. The drawing includes dimensions for the hole, the slot, and the border.

Technical drawing of a square plate with a cross-shaped hole. The plate has a total width of 50 and a total height of 50. The hole has a central square with side length 12.5 and four rectangular extensions with width 12.5 and height 12.5. The plate has a thickness of 3. The drawing includes dimensions for the hole and the plate, and labels P1 and P2.

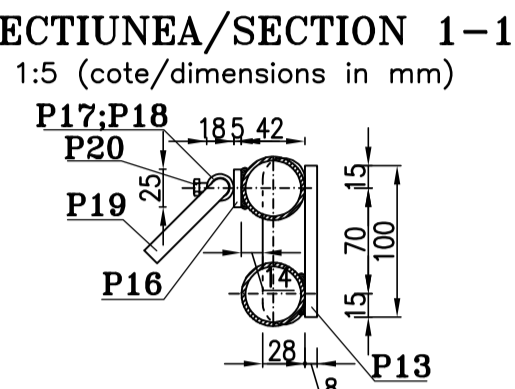
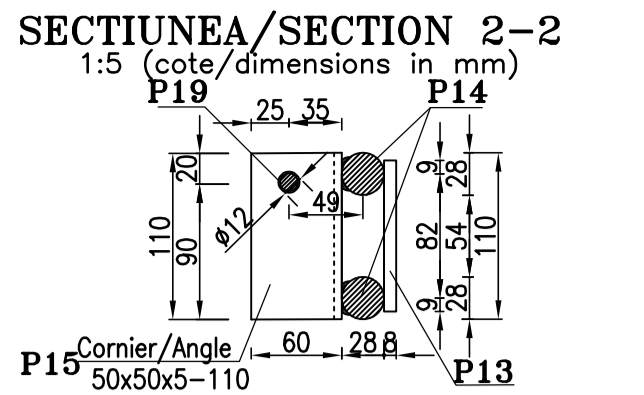
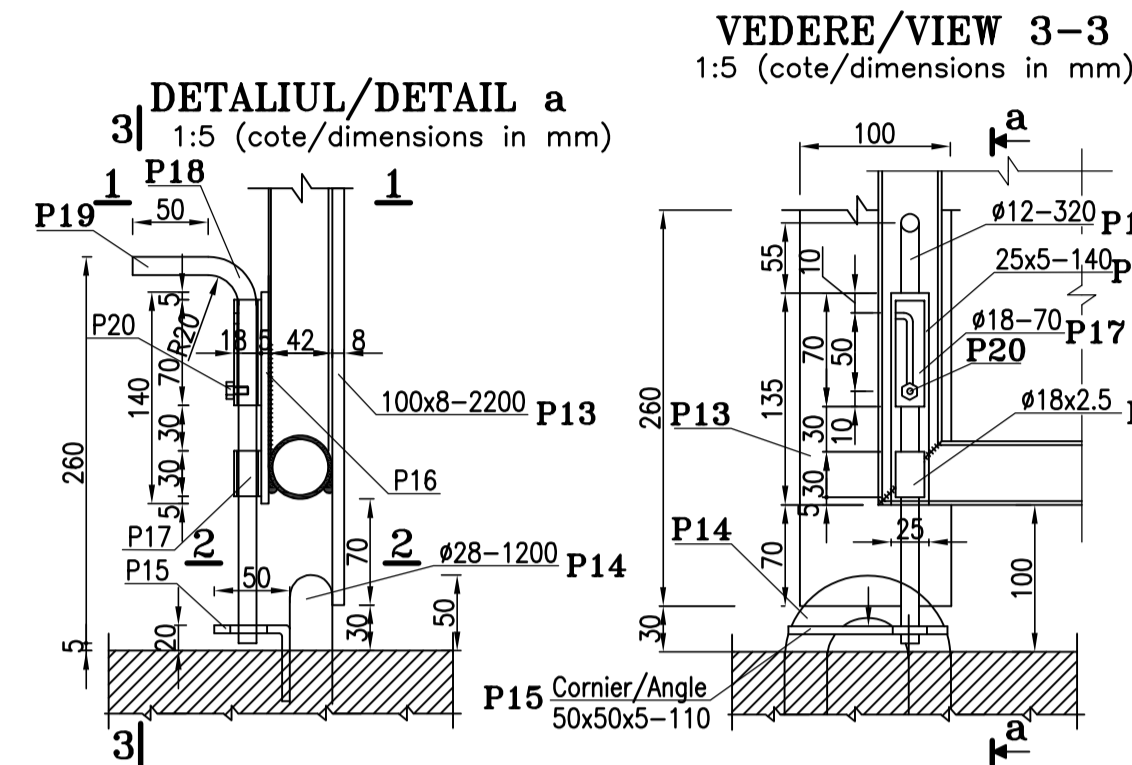
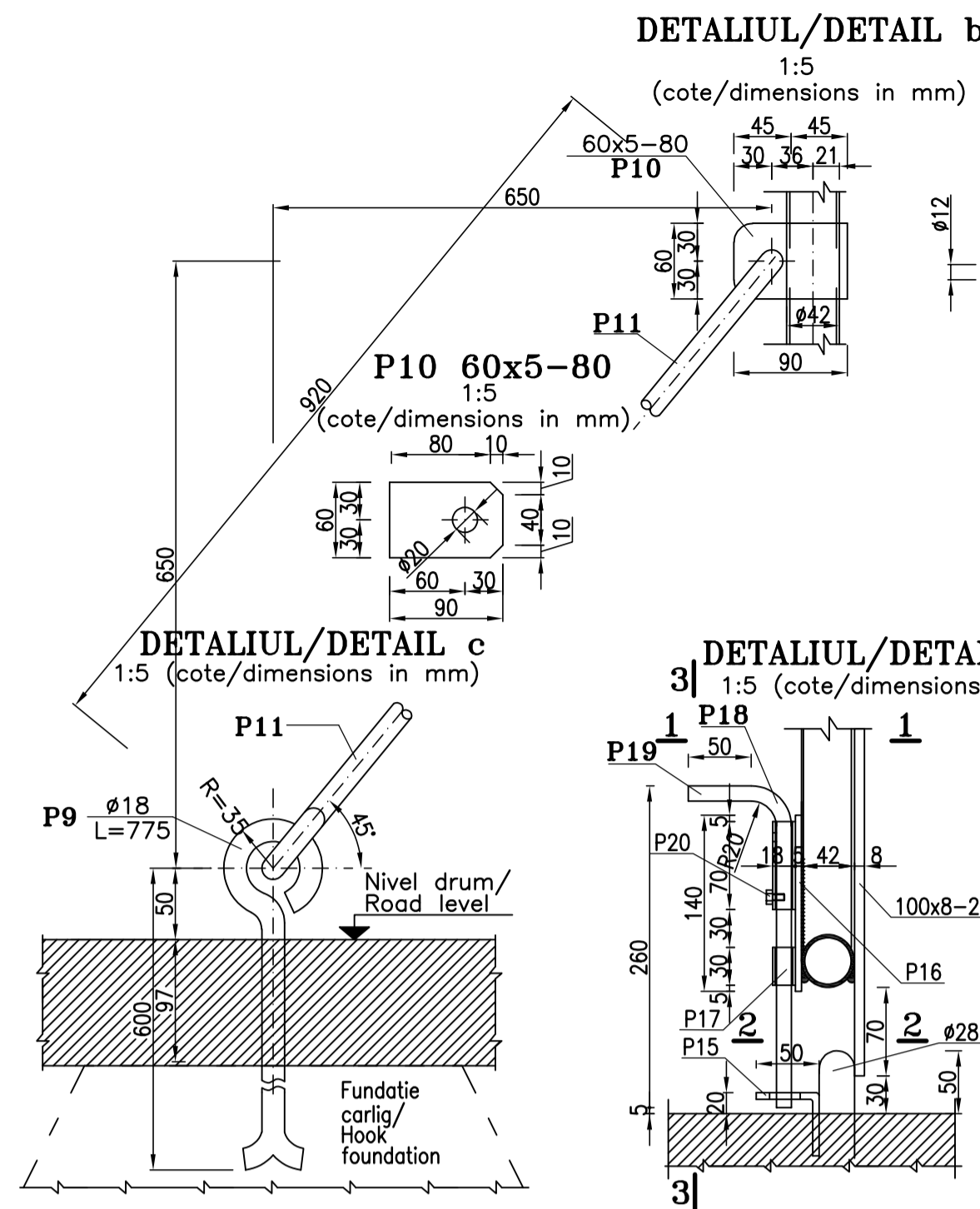
SUBANSAMBLU/ SUBSET	BUC.	MASA	[Kg]
	PUC.	PE PUC.	TOTAL
	PER PCS.	PER PCS.	
Panou/Panel 2.50m + 8 cieme (clamps) panou(panels)	22	25.30	556.60
Panou/Panel 1.50m + 8 cieme (clamps) panou(panels)	3	15.18	45.54
Panou/Panel 1.53m + 8 cieme (clamps) panou(panels)	1	15.87	15.87
Panou/Panel 2.01m + 8 cieme (clamps) panou(panels)	1	20.54	20.54
Panou/Panel 2.00m + 8 cieme (clamps) panou(panels)	1	20.44	20.44
Panou/Panel 1.00m + 8 cieme (clamps) panou(panels)	1	10.72	10.72
TOTAL		669.71	Kg

5/30; XC4+XF3; Cl 1,00;
3

SEISMIC DESIGN AREA WITH: $ag=0.40g$ and $T_c=1.6s$ ACC. TO P100-1/2013
CHARACTERISTIC LOAD AREA WITH SNOW ON GROUND 2.0 KN/m²
CONF. CODE CR1-1-3-2012
REFERENCE PRESSURE AREA OF 0.7 kPa ACC. TO CODE CR1-1-4-2012
CARACTERÍSTIC AMPLASAMENT
ZONA CÀLCUL SEISMIC CU: $ag=0.40g$ si $T_c=1.6s$ CONF. P100-1/2013
ZONA INCARCARE CARACTERÍSTICA CU ZAPADA PE SOL 2.0 KN/m²
CONF COD CR1-1-3-2012
ZONA PRESIUNE DE REFERINTA VANT 0.7 kPa CONF. COD CR1-1-4-2012

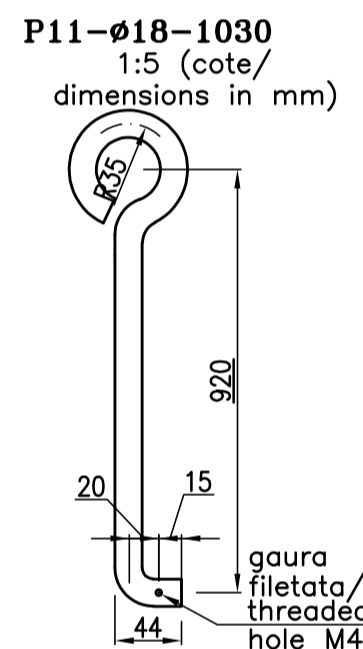
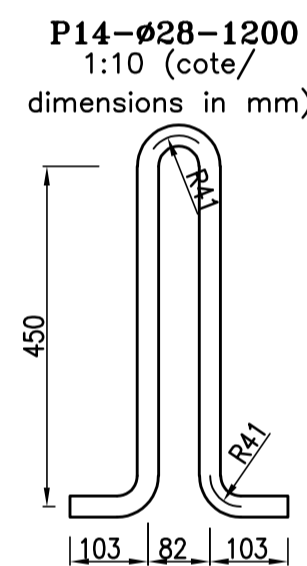
00	09.2022	EMIS PENTRU COMENTARII	S. ENACHE	BARDA S.	I. DURSINA	STAN C.
REV. IV	DATA	DESCRIERE	DESENAT	VERIFICAT	SEF PROIECT	APROBAT
SCARA:1:20		DATA PRIMEI EDITII:		PROIECTANT		
CLIENT:			PROIECTANT:			
 CONPET S.A. STR. 1848, NR. 1 - 3 PLOESTI, ROMANIA			 S.C. TEAM OIL S.R.L. STR. TRAIAN NR. 42 PLOIESTI, ROMANIA J29/695 din 22.08.2000			
DENUMIRE PROIECT:						
RELOCAREA OBIECTIVELOR CONPET CA URMARE A MODERNIZARII DEPOZITULUI DE TRATARE A TITILUII SATUC APARTINAND OMV PETROM						
DENUMIRE PLAN:						
<div style="text-align: center;">DESENE DETALII IMPREMIURE</div>						
PROIECT NR.		FAZA	FORMAT	DESEN NR.	PAGINA. NR.	REV. NR.
1214/2019		PT+DE	1 1/4 A1	Pr1214-CS06	1/2	00

ANSAMBLU PORTI/GATES ASSEMBLY
SC. 1:20
POARTA ACCES AUTO/DRIVER'S GATE 4.00m



Technical drawing of a rectangular plate with the following dimensions and features:

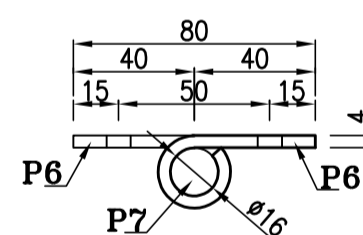
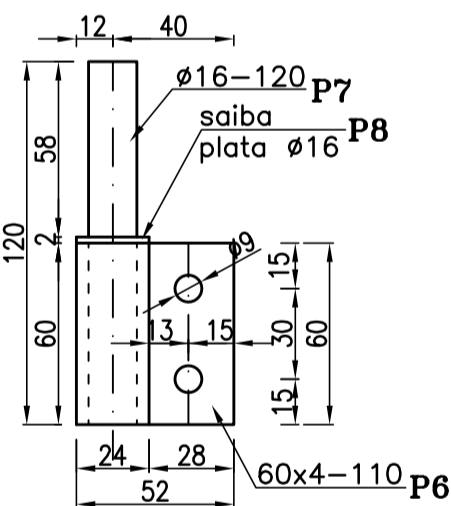
- Overall width: 52
- Overall height: 60
- Top edge features: A horizontal slot with a width of 28 and a depth of 15. A vertical slot with a width of 24 and a depth of 15.
- Bottom edge features: A horizontal slot with a width of 40 and a depth of 15. A vertical slot with a width of 12 and a depth of 15.
- Internal features: A central rectangular area with a width of 28 and a height of 13. A circular hole with a diameter of 10 is located within this central area.
- Material specification: 60x4-110 P6



CENTRALIZATOR CONF. METALLIC STEEL STRUCTURES SUMMARY

SUBANSAMBLU SUBSET	ELEMENT	Nr.buc No.pcs	Masa/Weight Kg Pe buc/ Per unit	
Poarta acces auto 4/Door access gate 4/Driver's auto	Canat poarta/Gate leaf	2	51.60	103.20
	Balamale / Hinges	8	4.5	3.60
	Dispozitiv fixare canat/ fix fastening device	1	18.20	18.20
	Dispozitiv inchidere cu zavor/ latch locking device	1	7.00	7.00
	TOTAL	11buc(pcs)	x132.00 kg	
Samburi si piuita / Fastening bolts and nuts	Samb/bolt M8x80	8	0.035	0.28
	Samb/bolt M8x60	24	0.028	0.672
	Samb/bolt M8x140	16	0.058	0.928
	Piuita/Nut AM 8	48	0.006	0.288
	TOTAL	2.168 kg		
Clema fixare pompu Clamp fixing pump cable	Clema cu piuita/ Clamp with M8 nut	38	0.12	4.56
	TOTAL	4.56 kg		

SUBANSAMBLU SUBSET	ELEMENT	Nr.buc. No.pcs.	Masa/Weight[Kg]		OBS.
			Pc. buc. Per unit	Total	
Poarta acces pietonal 1.00m/	Canat_poarta/Gate leaf	1	28.20	28.20	
Pedestrian gate 1.00m	Balamale/ Hinges	4	0.45	1.80	
	Opritor canat/Leaf stopper	1	3.30	3.30	
	TOTAL		1buc33.30	kg/buc	



Element	Posizio/ Position	Denumire/ Denomination	STAS/ STANDARD	Material	Dimensiuni/ Dimensions	No. bucs. Nr. pcs.	Masa/Weight kg/buc. (pcs.)
Conat poarta/ Gate leaf 4.00m	P1	Rama -teava/ Frame -tube	SR EN 10216/2-14	S235J2	442x2.5-1911	2	4.87
	P2	Rama -teava/ Frame -tube	SR EN 10216/2-14	S235J2	442x2.5-2200	2	5.61
	P3	Diagonala -teava/Bracing -tube	SR EN 10216/2-14	S235J2	442x2.5-2760	2	7.04
	P4	Diagonala -teava/Bracing -tube	SR EN 10216/2-14	S235J2	186x3-1100	2	9.90
	P5	Rigidizator -teava/Stiffener -tube	STAS 530/1-87	S235J2	432x2.5-1869	1	3.28
SUDURA/WELD ~3%							1.50
TOTAL						2buc.x51.60	kg/buc. (pcs.)
Balama/ Hinge	P6	Arpa balama -otel lat/ Hinge wing - flat steel	SR EN 10058/04	S235J2	60x4-110	1	0.20
	P7	Bolt -otel rotund/ Bolt -round steel	SR EN 10060-04	S235J2	16-120	1	0.19
	P8	Salba plata/Flat washer	SR EN ISO 7089-02	S235J2	A16	1	0.01
	SUDURA/WELD ~3%						0.05
TOTAL						8buc.x0.45	kg/buc. (pcs.)
Dispozitiv fixare canat poarta/ Gate leaf fastening device 4.00m	P9	Yaruc cu carig -otel beton/ Picket with carig -reinforcing steel	STAS 438/1-2012	S235	167-775	1	1.55
	P10	Ureche -otel lat/ Handle -flat steel	SR EN 10058/04	S235J2	60x5-80	1	0.19
	P11	Ancora cu carig -otel beton Hook anchor -reinforcing steel	STAS 438/1-2012	S235	161-1030	1	2.05
	P12	Surub balama -ancora/ Anchor blocking bolt	STAS 6404-88	gr.4.6	M4x15	1	0.006
	P13	Opritor canat -otel lat/ Leaf stopper -flat steel	SR EN 10058/04	S235J2	100x8-2200	1	13.82
SUDURA/WELD ~3%							0.58
TOTAL						1buc.x18.20	kg/buc. (pcs.)

Element	Positia/ Position	Denumire/ Denomination	STAS/ STANDARD	Material	Dimensiuni/ Dimensions	Nr.buc. No.pcs.	Masa/Weight kg./lb.	Greutate Total	
Dispozitiv inchidere cu zavor poarta/Gate latch locking device 4.00m	P14	Element blocare otel beton Blocking element –reinforcing steel	SR 438/1–2012	S235	ø28-1200	1	5.80	5.80	
	P15	Element fixare zavor otel corier Latch fixing element – angle	SR EN 10066/1–00	S235J2	150x50x5–110	1	0.42	0.42	
	P16	Placa suport zavor otel lat Steel base plate –flat steel	SR EN 10058–04	S235J2	25x5–140	2	0.20	0.20	
	P17	Manson fixare zavor teava Manson fixare latch –tube	SR EN 10216/2–14	S235J2	118x2.5–70	1	0.04	0.04	
	P18	Manson ghidare zavor teava Steel to guide the latch – tube	SR EN 10216/2–14	S235J2	ø18x2.5–30	1	0.02	0.02	
	P19	Bolt zavor otel beton Latch bolt – reinforcing steel	SR 438/1–2012	S255	M12-320	1	1.28	1.28	
	P20	Surub blocare bolt/ locking bolt pin	STAS 6404–88	gr.4	ø4x12	1	0.006	0.01	
	SUDURA/WELD ~3% din/from P13–P17						0.23		
	TOTAL						1buc.x7.00	kg./buc.	pcs.
	Suruburi cu piuita fiare bolomet Fastening bolts with nuts for hinges	P25	Surub/Bolt M8x80	grupa/grade 4.6	SR EN 80 4017/2011	–	M8–80	8	0.028
P26		Surub/Bolt M8x60	grupa/grade 4.6	SR EN 80 4017/2011	–	M8–60	8	0.023	0.184
P28		Surub/Bolt M8x140	grupa/grade 4.6	SR EN 80 4017/2011	–	M8–140	16	0.058	0.828
P29		Piuita/Nut AM 8	grupa/grade 4	SR EN 80 4032/2013	–	AM 8	48	0.006	0.288
TOTAL						2.168 kg.			

Element	Position/ Pozitia	Denimene/ Denomination	STAS/ STANDARD	Material	Dimensions/ Dimensiuni	Nr.buc No.pcs	Masa/Weight Pe buc/ Pe buc	kg Total
Balama/ Hinge	P1	Alipa balama –otel lat Hinge wing – flat steel	SR EN 10058:04	S235J2	60x4-110	1	0.20	0.20
	P2	Bolt –otel rotund Bolt – round steel	SR EN 10060-04	S235J2	#16-120	1	0.19	0.19
	P3	Saiba plata Flat washer	SR EN ISO 7089-02	S235J2	A16	1	0.01	0.01
		Sudura/Weld ~3% TOTAL					4buc.x0.45	0.05 kg/buc.
Capot portita 1.00m/ Gate leaf	P4	Rama –teava Frame –pipe	STAS 530/1-87	S235J2	#42x2.5-925	2	2.36	4.72
	P5	Rama –teava Frame –pipe	STAS 530/1-87	S235J2	#42x2.5-2200	2	5.61	11.22
	P6	Rigidizare –teava Stiffener –tube	STAS 530/1-87	S235J2	#32x2.5-855	1	1.56	1.56
	P7	Panel G1AZ G1AZ panel		STNB #5	925x1100	2	4.90	9.80
	Sudura/Weld ~3% TOTAL						0.90 28.20 kg	
Optitor canal portita 1.00m/ Gate leaf stopper1.00m	P8	Cornier Angle	SR EN 10056/1-00	S235J2	L30x30x4-1750	1	3.12	3.12
		Sudura/Weld ~3% TOTAL					0.18 3.30 kg	

- * Pozitionarea panourilor de gard si a stalpilor conform plan general amplasare PR1214-C501-01.
- * Pentru panouri si stalpi vezi plan PR1214-C506-01 pag 1/2.
- * Panourile de gard bordonate sunt din plasa de sarma zincata tip G2AZ 2.00x2.50;
- * Panourile de completare de se obtin prin decuparea din panoul G2AZ;
- * Fixarea panourilor de gard si a celor pentru paruta auto si pietonala pe stalpi se face clemle zincate M8 de tip T.
- * Constructiile metalice se incapeaza in categoria B conform STAS 767/0-88.
- * Prelucrare pieselor si imbinarea cu sudura la confectiile metalice se incapeaza in SI 150-89 Normativ privind Calitatea Imbinarilor
- * Sudute Din Otel Ale Constructiilor Civile, Industriale Si Agricole si se verifica vizual (100% aspect si 100% dimensiuni geometrice).
- * Protectia anticoroziva cu sistem de vopsire a structurilor de otel pentru durabilitate medie(M) 5-10 ani si clasa de corozivitate (atmosferica) C3(conform GP121-2013 si GP121-2004) realizata (cu exceptia panourilor gard care sunt zincate din fabrica) cu grund epoxidic 1 strat (80 µm grosime)+ 2 straturi vopsea epoxidica(2*80 µm grosime) in conformitate cu SR EN ISO 12944-5: 2008.
- * Aplicarea grundului se face la uzinare pe suprafetele pregatite pentru Sa 2.5-SR EN 8501-1: 2007.
- ***
- * Gaurile pentru fixarea panourilor cu clemle M8 de stalpi se executa la montaj.

00	09.2022	EMIS PENTRU COMENTARII	S. ENACHE	BADEA S.	I. DURSINA	STAN C.
REV. NR.	DATA	DESCRIERE	DESENAT	VERIFICAT	SEF PROIECT	APROBAT
SCARA: 1:20		DATA PRIMEI EDITII:		PROIECTANT		
CLIENT:			PROIECTANT:			
 <p>CONPET S.A. STR. 1848, NR. 1 – 3 PLOIESTI, ROMANIA</p>			 <p>S.C. TEAM OIL S.R.L. STR. TRAIAN NR. 42 PLOIESTI, ROMANIA J29/695 din 22.08.2000</p>			

BETON SIMPLU/PLAIN CONCRETE C25/30; XC4+XF3; Cl 1,00;
Dmax 16; S3